

Position Management Guidelines and Processes

V1 June 2019

Table of Contents

- Position Management Overview
- Position Management Guiding Principles (from BPR)
- Summit Reports
- Key Guidelines
 - Report Column Definitions & PeopleSoft Data Guidelines
 - Position Number Usage Guidelines
 - Department Budget Table Guidelines
 - Position/Job Guidelines
- Budget Reflected in Position Management
 - Budget: Overall Process
 - Budget: Fiscal Year Begins
 - Budget: In Year Changes
 - UM-Plan / PeopleSoft Integration

What is Position Management?

- Position Management is a campus driven strategic tool that provides transparency around positions and their respective funding.
- Position Management is used to organize, establish, and track positions. A "position" is a group of duties and responsibilities to be assigned to an employee.
- Focusing on the position itself provides the ability to track information related to the position, regardless of whether it is vacant or an employee is assigned to that position.

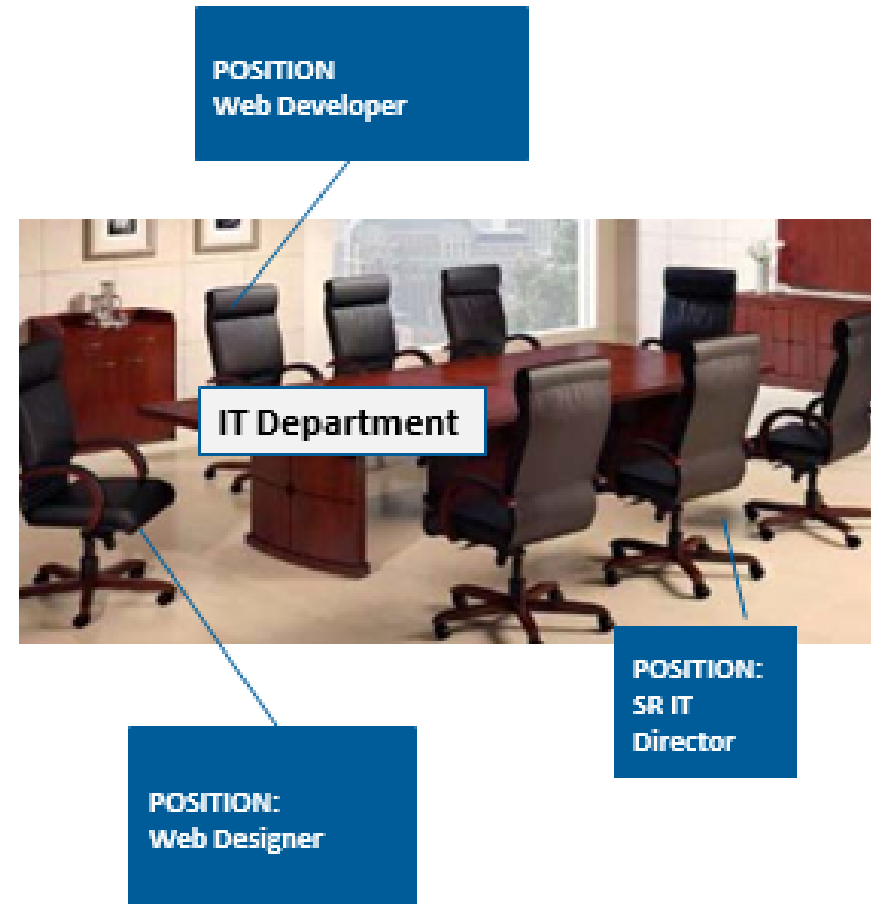
Position Management is often described with the analogy “seats at the table”

And it looks like this:

- A Table represents a **Major Budgetary Unit**
- The style, color and other characteristics of the chair represents the **Job**
- A chair or a “Seat” represents a unique **Position**

A Position can be:

- **Vacant or Filled**
- **Budgeted or Not Budgeted**

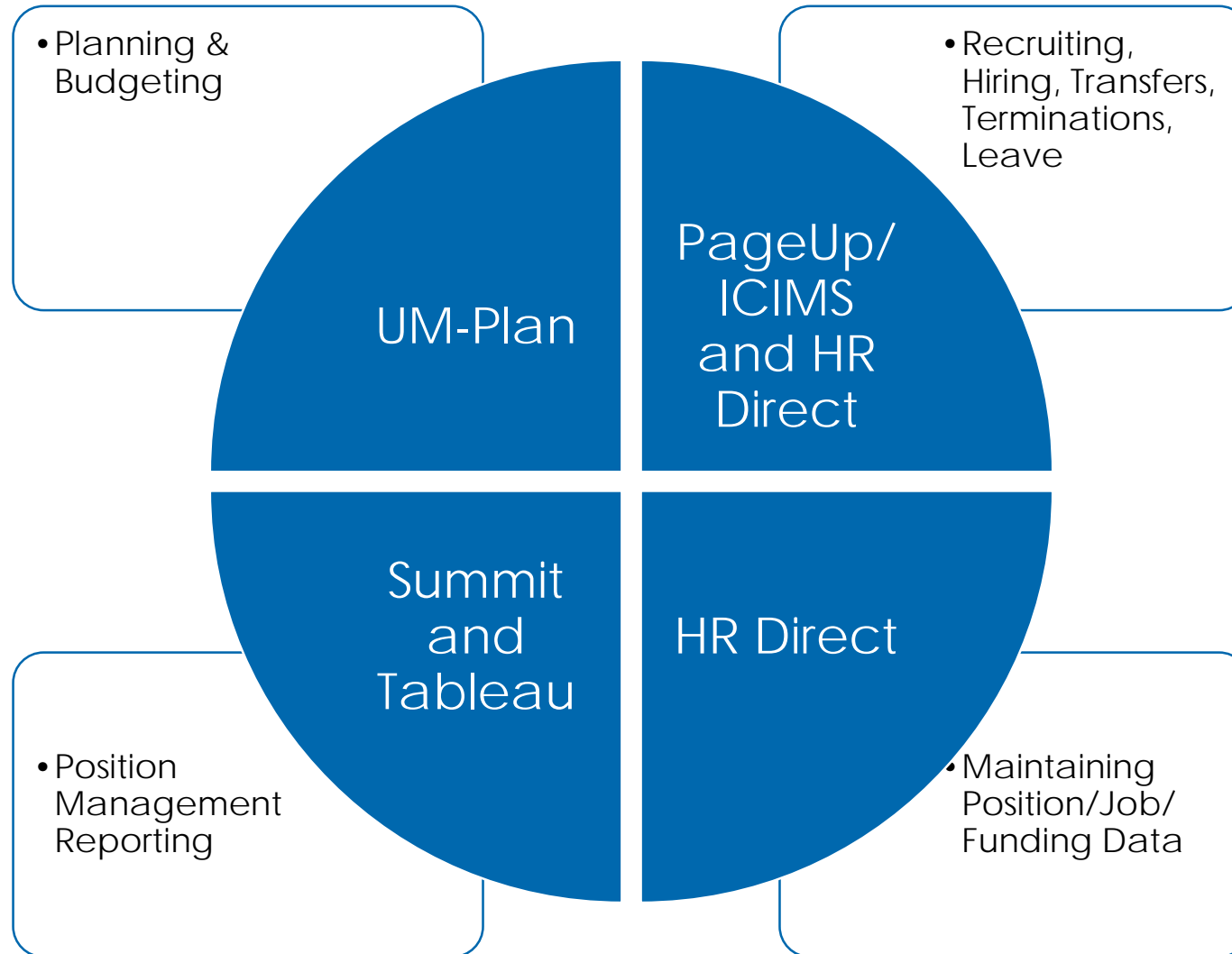


Key Terms

- **Budgeted Position:** A position that has funding in that fiscal year.
- **Position:** A chair that inherits and maintains job information which is then filled with an employee.
- **Employee:** A person who is paid through payroll.
- **Position Budget:** The budgeted dollars captured in the Encumber Salary Amount field in PeopleSoft Position Data.
- **Link to Funding Source:** PeopleSoft's capability for capturing split funding at the position level will be leveraged for vacant and filled positions. This is the most critical component that ties position to funding and supports the financial processes for budgeting and cost control.
- **Major Budget Unit (MBU):** An area on campus responsible for their budgets that interacts with the budget office on budgeting, forecasting and reporting on their budgets.

- **Vacant Position:** A position that is approved and unfilled.
- **Position – Approved:** A position that has been authorized to be filled.
- **Position – Budgeted:** A position that has funding in that fiscal year.
- **Position – Filled:** A position with a current incumbent.
- **Position – Frozen:** A position that has not been authorized to be filled.
- **Position – Proposed:** A position for which the MBU is seeking position approval.
- **Position – Vacant:** A position that does not have a current incumbent.

Position Management



Position Management Guiding Principles

- Split funding at the position level Department Budget Table should always be by percentage only.
- Budget amount reflects the 'approved budget' for that position as of July 1st. As changes to the position occur during the fiscal year, position management will be updated to reflect the 'working budget' for that position using an effective date. *Campuses may choose to maintain the July 1st budget for the entire year and not update the 'working budget' as changes occur.*
- The budgeted amount on the position report (fiscal year based) will be equal to what is described in #2 (above). The position level data in the Department Budget Table will show how much of the budget each finance department/fund/project is allocated.
- Every position should have a corresponding position level Department Budget Table record that reflects the funding source for that position.
- Position level Department Budget Table setup for vacant positions for calculating and reporting the budget amount by labor distribution.
- Status quo vacant positions will not encumber dollars in the PeopleSoft finance system.
- Campuses will establish processes to maintain position level Department Budget Table.
- Movement of budgeted dollars during the fiscal year will be specific to each campus' policy and process.
- Temporary employees will be handled via each campus' business process. If campuses want to track positions for temporary employees, the same guidelines as for regular full-time benefitted positions should be followed.

Available Summit Reports

- **Annual Commitment Report HR Version**
 - Position centric view that summarizes data at the position level.
 - No breakout of amounts by GL chart field.
- **Annual Commitment Report Finance Version**
 - Starts at the position and breaks the amounts out by GL chart field.
- **Position Budget Only Fiscal Year Summary** (pending)
- **Executive Summary Report**

Annual Commitment Report HR Version

Summit^{2.0} Sign Out

Position Management Implementation Home Dashboards ▼ Signed In As

Reports Data Reconciliation Error Reports ⚙️

Annual Commitment Report - Finance Version **Annual Commitment Report - HR Version** Position Budget Only FY Summary

Prompting

HR Dept: --Select Value-- Employee Name ID: --Select Value-- Position Number: --Select Value-- Apply Reset ▼

Annual Commitment Report HR Version

Fiscal Year 2019 Campus UMCEN

Position Number	Position Effective Stat Code	Position Status	Title	HR Dept ID - Desc	Employee Name	Employee ID	Empl Rcd	Date Vacancy Created	Position Planned Hire Date	Filled/Vacant	Union Code	Allocated Budget FTE	Allocated Budget	Allocated Employee FTE	Employee Allocated FY Rate
00007895	A	Approved	Assistant Treasurer	C823000 - University Treasurer's Office	Briggs, Samantha	10001001	1			FILLED	P72	1.00	114,729	1.00	114,44

Annual Commitment Report Finance Version

Summit ^{2.0} Sign Out

Position Management Implementation Home | Dashboards ▼ | Signed In As

Reports | Data Reconciliation | Error Reports ⚙️

Annual Commitment Report - Finance Version | Annual Commitment Report - HR Version | Position Budget Only FY Summary

Prompting

HR Dept: --Select Value-- ▼ Employee Name ID: --Select Value-- ▼ Position Number: --Select Value-- ▼ Fund Code - Desc: --Select Value-- ▼ Finance Department ID - Desc: --Select Value-- ▼ Apply Reset ▼

Annual Commitment Report Finance Version

Fiscal Year: 2019 ▼ Select View: With Position Subtotal ▼

Campus: UMCEN ▼

Position Number	Position Status	Title	Employee Name	Employee ID	Empl Rcd	Employee Status	Filled/Vacant	Date Vacancy Created	Position Planned Hire Date	Allocated Budget FTE	Allocated Budget	Allocated Employee FTE	Employee Allocated FY Rate	Expended FYTD	Remaining Commitment	Vacancy Encumbrance	Payroll Projection
00007895	Approved	Assistant Treasurer	Briggs, Samantha	10001001	1	Active	FILLED			1.00	114,729	1.00	114,444	96,713	20,122	0	116,835
00007895	Total									1.00	114,729	1.00	114,444	96,713	20,122	0	116,835

Position Budget Only Fiscal Year Summary

Summit 2.0 Sign Out

Position Management Implementation Home Dashboards Signed In As Darpan Gokharu 10128031

Reports | Data Reconciliation | Error Reports

Annual Commitment Report - Finance Version | Annual Commitment Report - HR Version | **Position Budget Only FY Summary**

Prompting
PENDING

Current position effective row; current incumbent; current /last DBT entry
 Position Management Budget Detail - Current View Only

Budget FY Summary: Sum of start and change amounts

Position Management FY Summary

Fiscal Year 2019

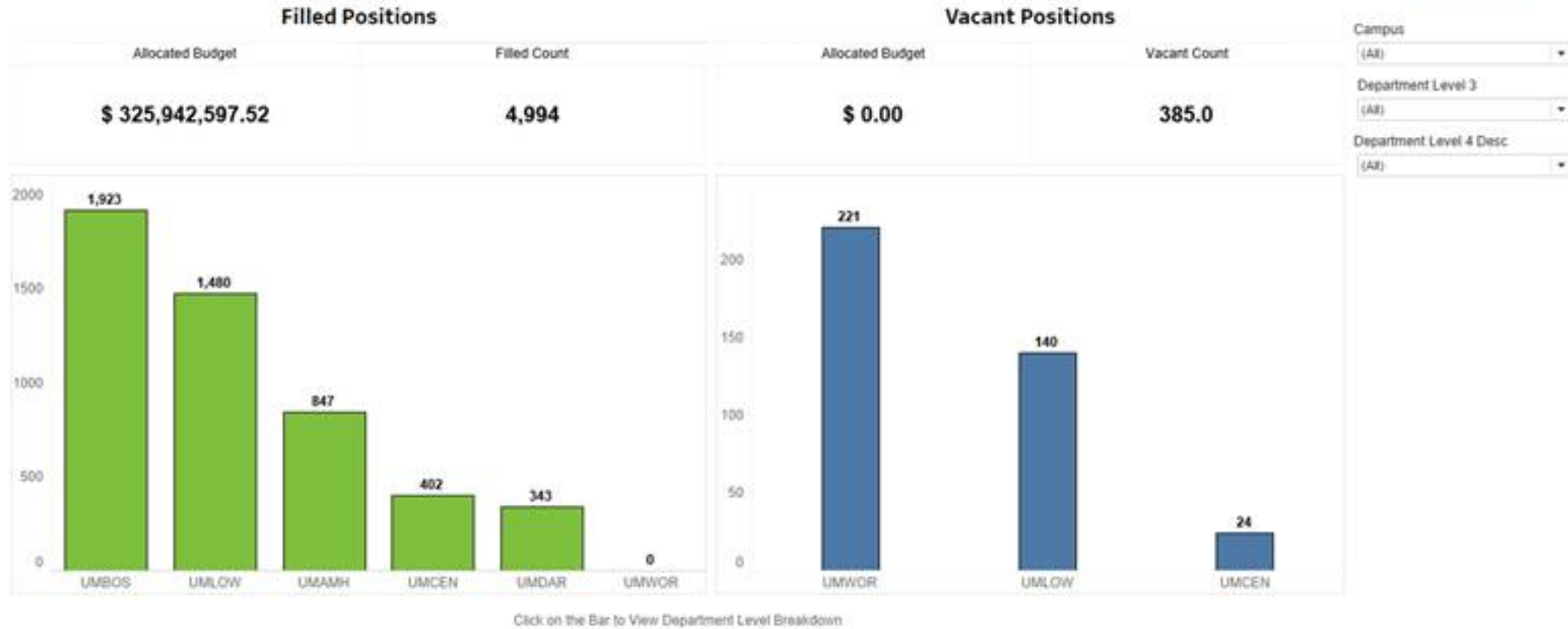
Rows 1 - 25

Position Budget	Position - PM	Department - Position	Position - PM			Position Current Incumbent		Position - PM	Fact Position Budget		Position Budget			FDM Business Unit	FDM Fund	FDM Organization	FDM Prog
Position Code	Position Business Unit	HR Dept ID	Position Effective Stat Code	Effective Date	Planned Hire Date	Person Name - ID	Incumbency Start Date	Position Status	Budget Change - Allocated	FTE Change - Allocated	DBE Business Unit	DBE HR Dept ID	Combo Code	FDM Business Unit	Fund Code	DeptID	Prog Code
00007895	UMCEN	C823000	A	11/25/2018			4/30/2017	Approved	114,729	1.00	UMCEN	C823000	C100083	UMCEN	51443	C823000000	F00
00007895 Total									114,729	1.00							
00018449	UMCEN	C990507	A	7/1/2018			7/29/2018	Approved	9,486	0.20	UMCEN	C990507	C101887	UMCEN	52118	C990507000	A00

Executive Summary Report

UMASS Position Management Summary

Last Updated 4/18/2019



Campus

Department Level 3

Department Level 4 Desc

Future Trend Views
 Coming Soon

Report Column Definitions & Data Guidelines

The following resources can be accessed via the Position Management website
<https://www.umassp.edu/hr/position-management>

- The Annual Commitment Report (Finance and HR view) column definitions
- The Guidelines for PeopleSoft Data at Job Data, Position Data, and Job Code level
- The new Action Reason Codes
- The chart representing where data will be maintained and where information will be pulled for the reports

POSITION DATA MANAGEMENT GUIDELINES

POSITION NUMBER USAGE GUIDELINES

Position Number Usage Guidelines

- One of the first decisions when starting a new recruitment is to decide which position number to use. This guide will assist with determining which process to follow.
 - (1) Use an active existing position number
 - (2) Use an inactive existing position number
 - (3) Create a new position number
- All campuses minimally should have an annual process to review and inactivate any vacant benefited positions that will not be filled and therefore no longer planned/budgeted for.

Position Number Usage Guidelines

Using an active existing position number

- Departments should seek to reuse position numbers first, before creating new position numbers.
- The continuity of the position over time should be maintained as much as possible.
- Staff positions must remain staff positions; faculty positions must remain faculty positions.
- Please refer to campus specific guidelines for more details.

Using an inactive existing position number

- Departments should seek to reuse position numbers first, before creating new position numbers .
- This should be implemented based on campus specific guidelines.

Position Number Usage Guidelines

Creating a new position number

- New positions may be created if:
 - There are no eligible existing position numbers available to reuse (e.g., no more inactive positions of like kind, or the department wants to hold a position vacant for recruitment at a later date, etc.).

or

- The unit is establishing a brand-new role separate from existing positions.
- To create a new position, follow the Annual Budget or In-Year process (included)

DEPARTMENT BUDGET TABLE GUIDELINES

DEPARTMENT BUDGET TABLE (DBT) GUIDELINES

Audience – Campus Commitment Accounting Staff

- A DBT record must exist at the position level for all positions (filled and vacant). *This record should not be confused with appointment level (employee level).*
- It is important to keep the HR Department ID in sync between the Position Data and the DBT at the appointment level and the position level.
- Depending on your campus, during the year:
 - If an employee's funding changes you will need to change the position funding as well.
 - If a new position is created, you will need to create a DBT at the position level.
- There will be a rollover program to copy forward the funding from one fiscal year to next. Campuses can request this to be run through UITS.

Initial screen to begin setup of Department Budget Table at the Appointment Level

Department Budget Table USA

Department Budget Table USA

Enter any information you have and click Search. Leave fields blank for a list of all values.

Find an Existing ValueAdd a New Value

▼ Search Criteria

Set ID	=	▼	UMCEN	Q
Department	begins with	▼		Q
Fiscal Year	=	▼	2019	
Budget Level	=	▼	Appointment	▼
Position Pool ID	begins with	▼		Q
Job Code Set ID	begins with	▼		Q
Job Code	begins with	▼		Q
Position Number	begins with	▼		Q
Empl ID	begins with	▼	10200999	Q
Empl Record	=	▼	0	Q

Include History Correct History

Department Budget Table setup at a the Position Level

Department Budget Table USA

Department Budget Table USA

Enter any information you have and click Search. Leave fields blank for a list of all values.

Find an Existing Value

Add a New Value

Search Criteria

Set ID

=

JMCEN



Department

begins with

C990502



Fiscal Year

=

2019

Budget Level

=

Position



Position Pool ID

begins with



Job Code Set ID

begins with



Job Code

begins with



Position Number

begins with

00019737



Empl ID

begins with



Empl Record

=



Include History

Correct History

Budget Reflected in Position Management

Budget: Overall Process

- PeopleSoft HR Direct is the system of record for the position budget
- Budget Process Kick-Off
 - Amherst – Fall (UM-Plan pilot for FY20 budget); Medical – Fall (not used for FY20 budget)
 - Boston, Dartmouth, Lowell, PO – February (UM-Plan used for FY20 budget)
- Budget Development (Annually)
 - Using a snapshot date (snapshot should be taken as close to the launch of the budget exercise; may not be the same for each campus), a feed from PeopleSoft will be provided to UM-Plan.
 - PO will provide certain assumptions for positions such as Collective Bargaining and Fringe.
 - Other campus wide assumptions will be added to the Campus Utility in UM-Plan
 - Departments will be responsible for making updates to salary (i.e. promotions), funding source, requests for new / changes to positions, or other non-standard changes to positions in UM-Plan

Budget: Overall Process (continued)

- Budget Approval – once budgets are approved, the position budget and funding will be provided from UM-Plan to PeopleSoft HR Direct
- Automated Feed – automate the feed of budget and / or funding data to PeopleSoft
 - Manual Feed – manual process to load budget and / or funding data to PeopleSoft using campus process flow; this may include a spreadsheet upload.
- Budget Management – The approved budget will always be maintained in UM-Plan; as changes occur, they will be reflected in UM-Plan through the “Working Budget” fields and communicated to PeopleSoft via an automated or manual process; campuses may decide under what circumstances the ‘working budget’ will be adjusted in PeopleSoft, in other words the July 1st budget may be maintained for the full year.
- The budget in PeopleSoft will always be the Approved or Working budget; some campuses will load an approved budget and never change it, others will maintain a working budget all year and change PeopleSoft to reflect that working budget. This will enable the reports to be effectively used by departments and end users.

Budget: Fiscal Year Begins (July 1 Budget)

- The fiscal year approved budget for a position should include:
 - Full year or partial year funding (depending on what was approved)
 - Base salary (fed from PeopleSoft Position Management to UM-Plan)
 - Step increases (calculated in UM-Plan)
 - Full fiscal year cost adjustment (i.e. extra day) (calculated in UM-Plan)
- Note: Collective Bargaining / Merit increase may be budgeted in a central utility
- Upon budget approval, this budget and any adjustments to funding sources should be loaded into PeopleSoft via an automated or manual process; this includes:
 - Budget (Encumber Salary Amount)
 - Funding Source changes (Department Budget Table)
 - Budgeted Position check box (for those campuses utilizing this field)

Budget: In Year Changes

- As changes to the position occur during the fiscal year, position management will be updated to reflect the 'working budget' for that position
- The changes may be for:
 - Position vacated and filled at different salary
 - Adjustments to incumbent salary
 - Reorganization of positions / departments
- The working budget for a position should include:
 - Full year or partial year funding (depending on what was approved)
 - Base salary changes
 - Step increases (if applicable)
 - Collective Bargaining / Merit increase (if applicable)
 - Full fiscal year cost adjustment (i.e. extra day)

Budget: In Year Changes

- Upon approval of the working budget, this budget and any adjustments to funding sources should be loaded into PeopleSoft via an automated or manual process; this includes:
 - Budget (Encumber Salary Amount)
 - Funding Source changes (Department Budget Table) including HR Dept ID changes
 - Budgeted Position check box unchecked
- The timing of when these changes should occur can be determined by each campus; for example:
 - In real time as changes are approved
 - Monthly
 - Quarterly
 - Annually

Budget: In Year Changes Scenarios

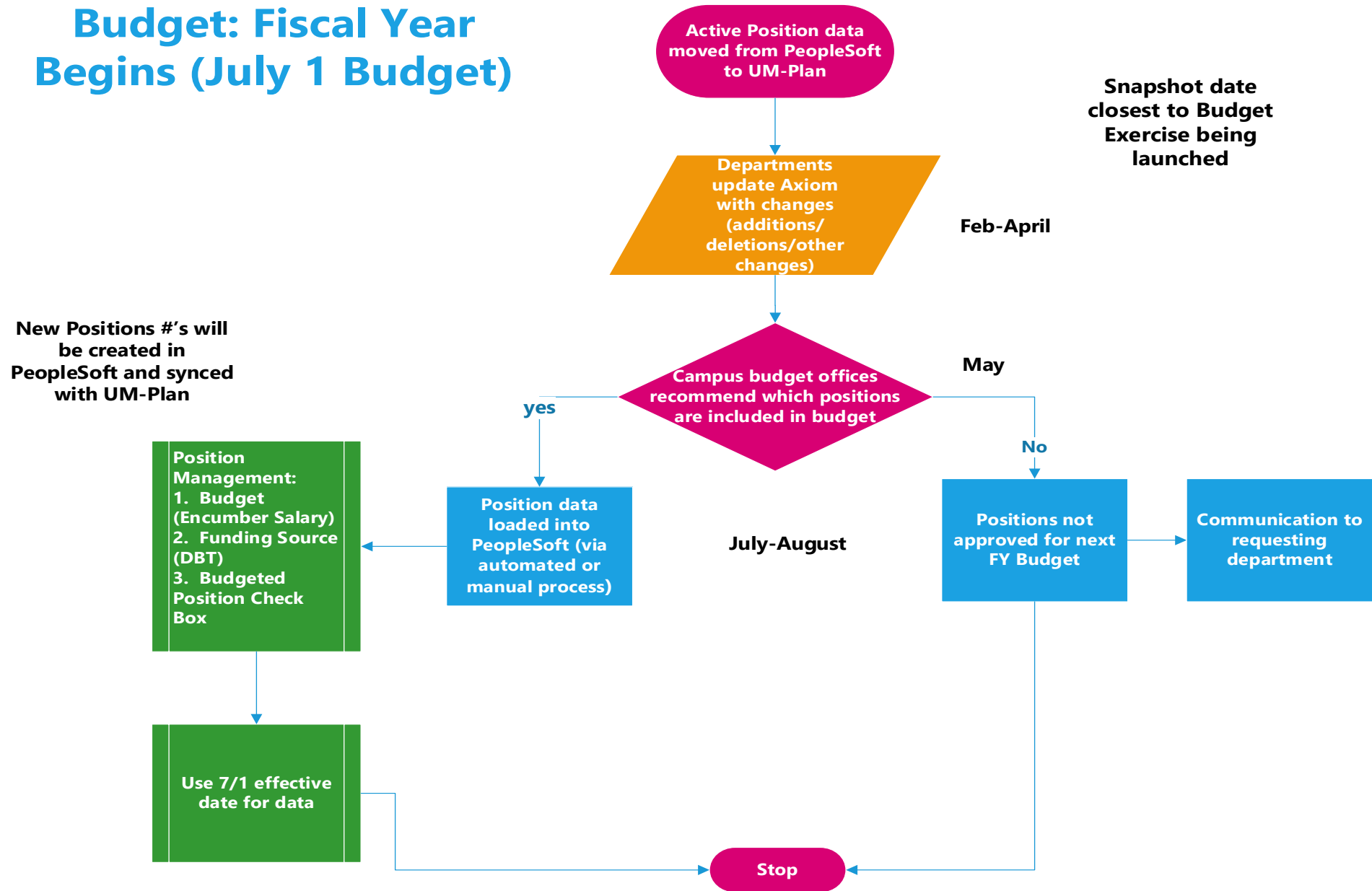
- Employee moving from one position to another during a fiscal year.

Scenario 1: An employee is promoted from Position A to Position B during the middle of the Fiscal Year and Position A becomes inactive. On the original Position (A) update the Budget Amount with the actual payroll paid. This will show the inactive Position (Position A) as having a budget and actual amount that equal each other.

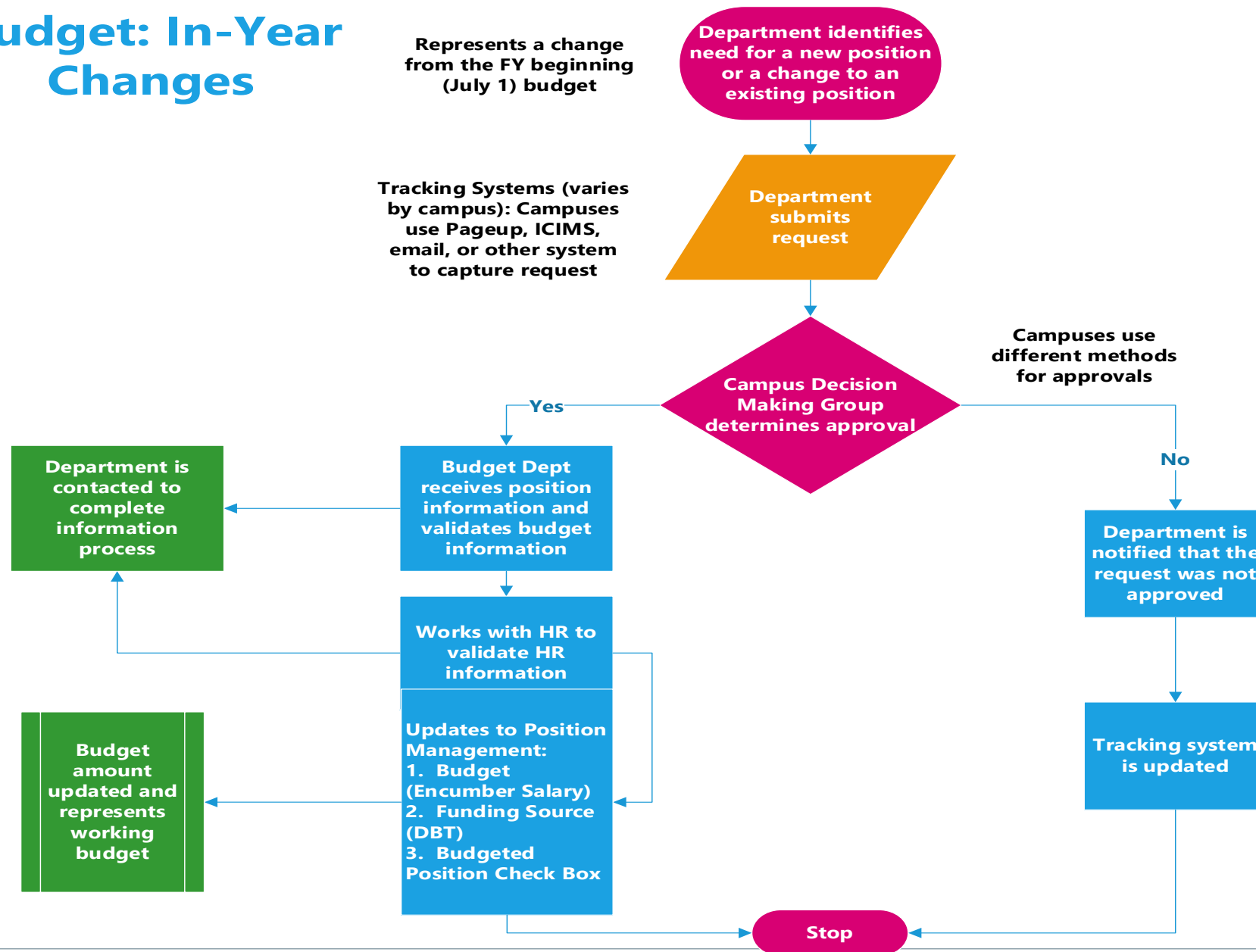
- Position is vacated and is being made inactive

Scenario 2: Set Status to "Inactive"; Set Effective Date to the campus specified value; Set Reason Code to "INA" (position inactivated). Campuses can choose to update the Budget Amount with the actual payroll paid. This will show the inactive Position as having a budget and actual amount that equal each other.

Budget: Fiscal Year Begins (July 1 Budget)



Budget: In-Year Changes



UM-Plan Position Management

- All benefited positions will have position numbers and be budgeted at the position level. Some non-benefited employees MAY be tracked by person, or via the bulk planning sheet. Any employee that does not have a position number must be budgeted in the bulk planning sheet.
- Positions imported into UM-Plan will have a field to designate which positions are active/inactive. This will be used in a filter to determine which positions show up in the labor planning template.
- Each position may contain multiple employees in the case that one employee is leaving and another is starting and there is some overlap, but for the most part, each position will be filled by only one employee at a time.
- Each campus can decide which types of employees are planned by individual position/employee, but generally all administrative positions are planned at the employee level. Other groups of employees, such as those involved with grants, gifts, and student employees, will be planned on the bulk planning sheet.
- Employees do not share position numbers: If a person is working in more than one position, this employee will be budgeted on two separate lines (within two separate position blocks) in the labor planning budget.

Employee Position/Job Scenarios

Employees With Multiple Jobs

- An employee could have two different position records that map to two different jobs and hence two different employee records.

Two Employees in the Same Position

- In certain situations one position may have two people (a shared chair). The headcount should reflect the accurate number of EE's.

Employee goes on leave without pay

- It is important to populate the expected return date when an employee goes on leave without pay. The report can then more accurately calculate the projected encumbrance upon return.

Managing New Positions Between UM-Plan & PeopleSoft HR Direct

- A New Position tab will be used to budget for new positions. These positions will show up in the labor budget without running through an approval process.
- Campuses can instead choose to use the budget template to add either a bulk total dollar amount to an account line for the purpose of budgeting for new positions, or the New Request option to track a bulk dollar request amount for approval.
- New positions should ultimately be setup in PeopleSoft in order to show up on Summit Position Management reports.

UM-Plan / PeopleSoft Integration

